

WELCOME TO THE 2022

*American Planning Association -
Massachusetts Chapter*

PLANNING AWARDS



2022 APA-MA CHAPTER PLANNING AWARDS

ELECTED OFFICIALS OF THE YEAR





+

ELECTED OFFICIALS OF THE YEAR

**GOVERNOR CHARLIE BAKER
LT. GOVERNOR KARYN POLITO**



+

2022 APA-MA CHAPTER PLANNING AWARDS

EMERGING / RISING PLANNER AWARD





EMERGING / RISING PLANNER AWARD

ROWEN McCALISTER
TOWN OF SHREWSBURY



2022 APA-MA CHAPTER PLANNING AWARDS

CITIZEN PLANNER AWARD





CITIZEN PLANNER AWARD

JESSE GELLER

BROOKLINE ZONING BOARD OF APPEALS



2022 APA-MA CHAPTER PLANNING AWARDS

PROFESSIONAL PLANNER AWARD





PROFESSIONAL PLANNER AWARD

WAYNE FEIDEN, FAICP
CITY OF NORTHAMPTON

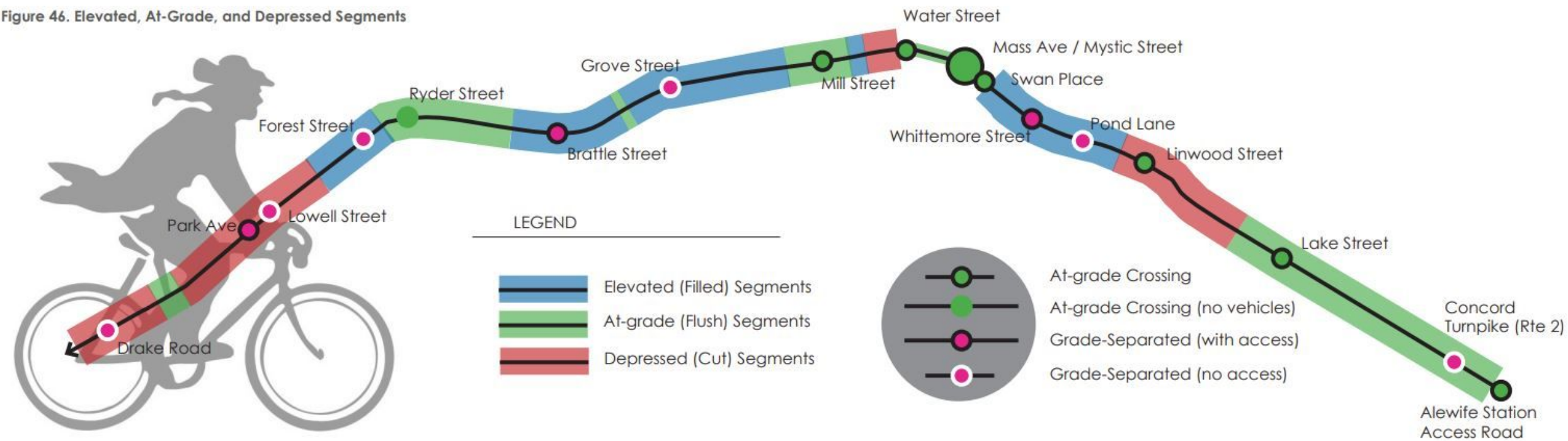


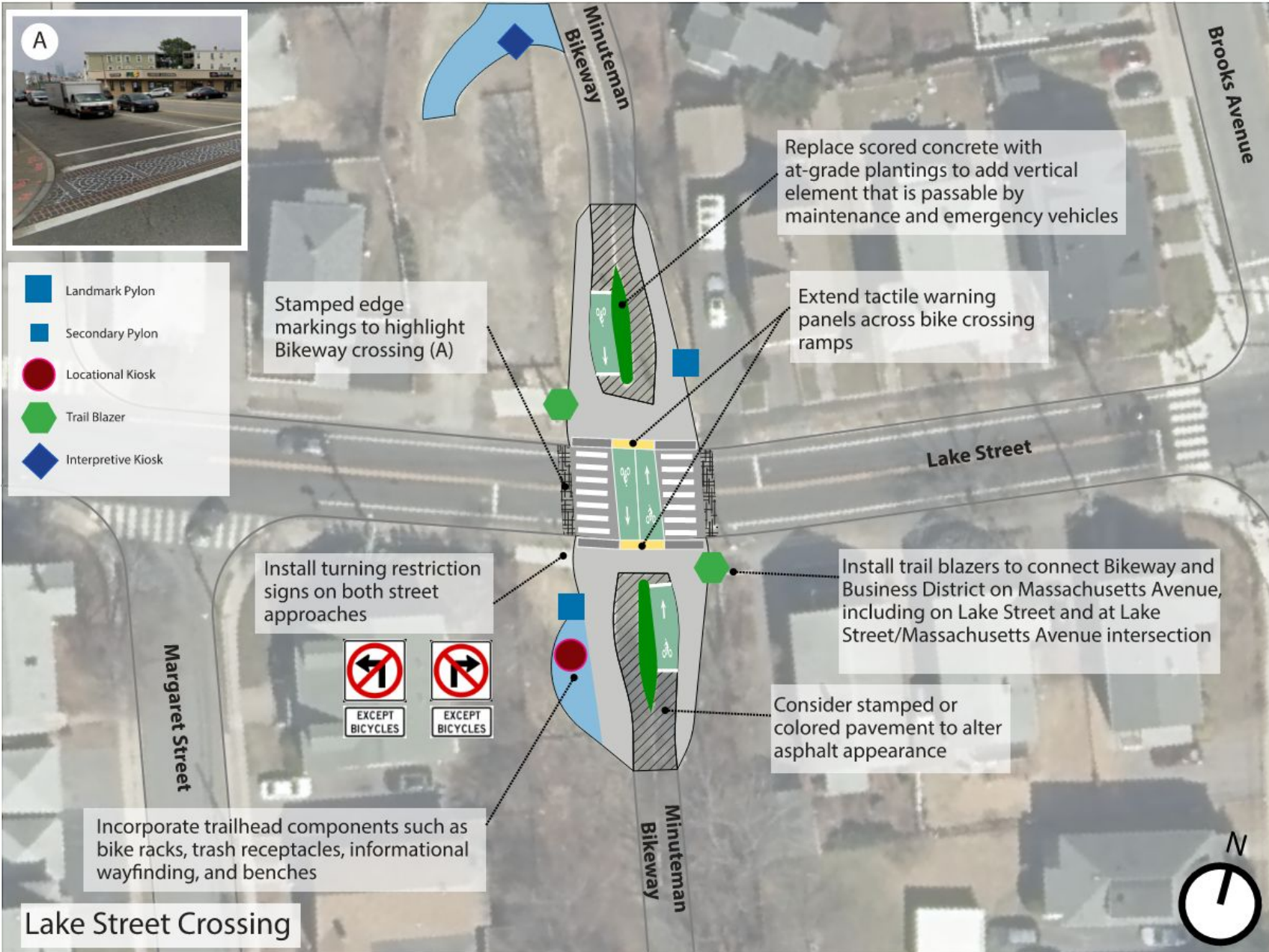
2022 APA-MA CHAPTER PLANNING AWARDS

TRANSPORTATION + MOBILITY PLANNING AWARD



Figure 46. Elevated, At-Grade, and Depressed Segments

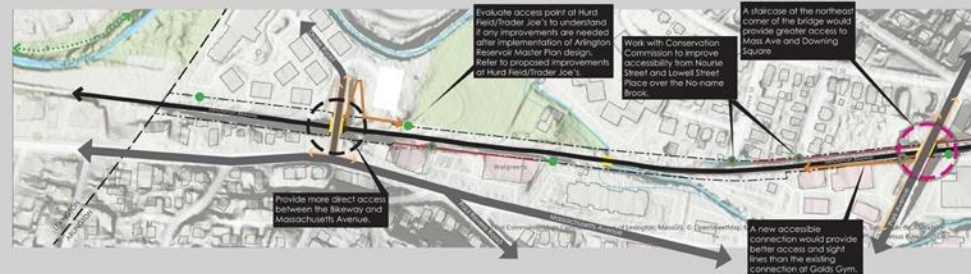




Potential Access Improvements

MINUTEMAN BIKEWAY PLANNING PROJECT | ARLINGTON, MA

1. Lexington Border to Park Avenue



3. Hill's Hill to Grove Street



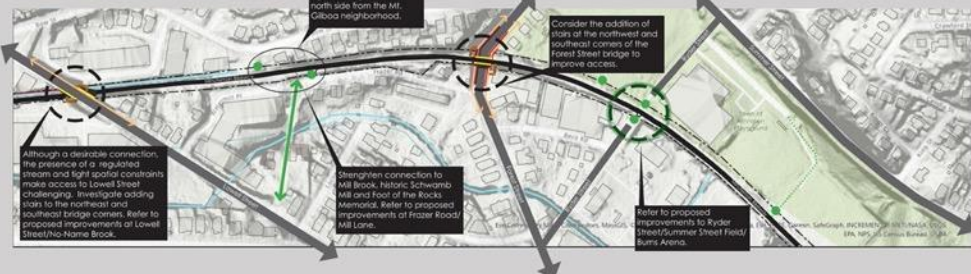
5. Mystic Street to Scannell Field



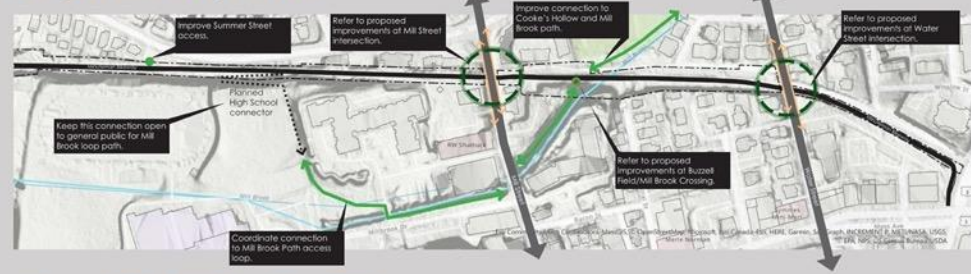
7. Thorndike Field to Cambridge Border



2. Lowell Street to Hill's Hill



4. High School to Mystic Street



6. Scannell Field to Thorndike Field



LEGEND





TRANSPORTATION + MOBILITY AWARD

TOWN OF ARLINGTON MINUTEMAN BIKEWAY PLANNING PROJECT

TOWN OF ARLINGTON
in consultation with
DKittelson & Associates, Inc. and GPI

Town of Arlington, MA

Department of Planning and Community Development



**Town of Arlington
Minuteman Bikeway
Planning Project**



July 2022



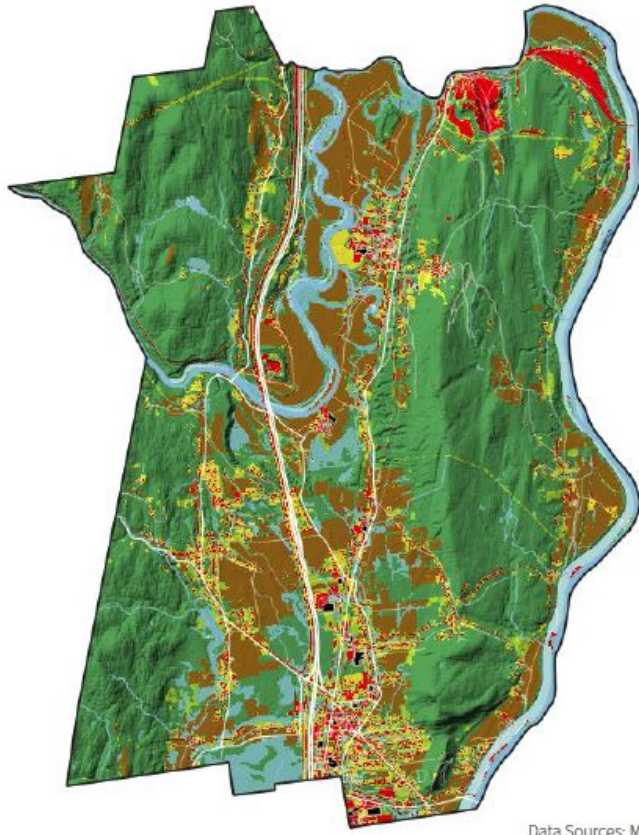
2022 APA-MA CHAPTER PLANNING AWARDS

SUSTAINABILITY + RESILIENCY AWARD



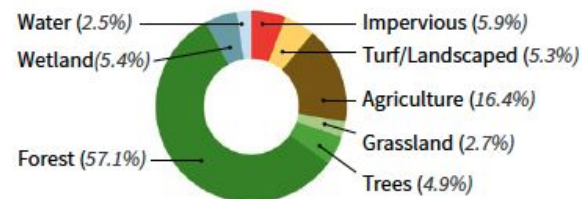


Landcover



Data Sources: MassGIS 2016 Landcover

Forest	12,525 ac
Agriculture	3,506 ac
Wetland	1,160 ac
Turf & Landscaped Areas	1,123 ac
Trees	1,041 ac
Impervious	965 ac
Grassland or Shrub	571 ac
Open Water	527 ac

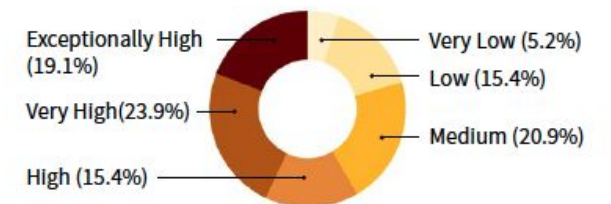


Predicted Soil Organic Carbon



Data Sources: Soils SSURGO-Certified
NRCS, NRCS Rapid Carbon Assessment,
MassGIS 2016 Landcover

Very Low (0-20 tons/acre)	1,120 ac
Low (20-40 tons/acre)	3,299 ac
Medium (40-60 tons/acre)	4,481 ac
High (60-80 tons/acre)	3,306 ac
Very High (80-100 tons/acre)	5,107 ac
Exceptionally High (100+)	4,097 ac





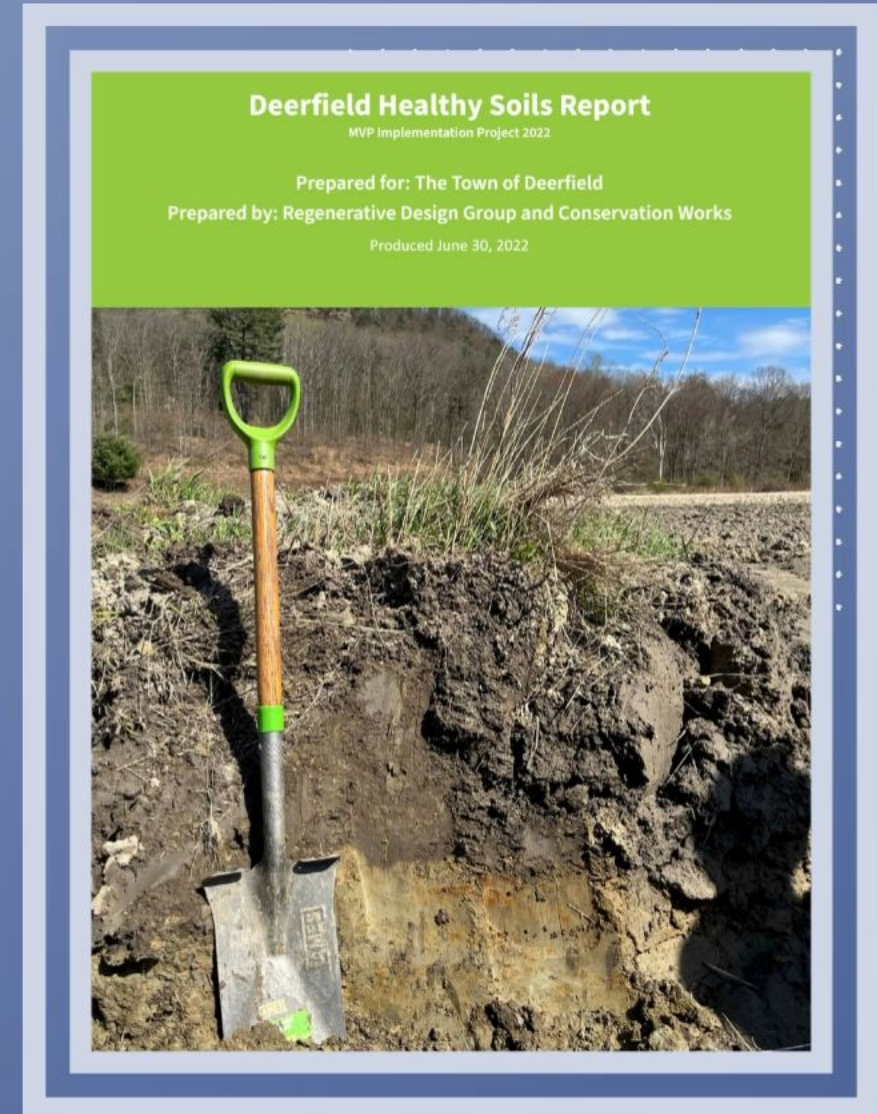


SUSTAINABILITY + RESILIENCY AWARD

DEERFIELD HEALTHY SOILS

TOWN OF DEERFIELD

in collaboration with Regenerative Design Group and Conservation Works



2022 APA-MA CHAPTER PLANNING AWARDS

STUDENT PROJECT AWARD









STUDENT PROJECT AWARD

‘COOL ROXBURY’: LOWER ROXBURY’S EXTREME HEAT CHALLENGES AND SOLUTIONS

UNIVERSITY OF MASSACHUSETTS - BOSTON

Department of Urban Planning and Community Development

Students: Jayla Cardoso, Adam Chaavhi, Cristofer Cruz, Camily Fidalgo, Ceide (Ashley) Guillaume, Mezziah Jones, Esperanza Knudson, Wendy Lima Diaz, Aidan Luciano, Kelly Mendes, Kevin Meridien, Jeremiah Murat, Jeremiah Ray, Andres Roman, Oscar Zelaya

Faculty: Sajani Kandel, Kenneth Reardon, PhD, Alan Wiig, PhD

‘Cool Roxbury’: Lower Roxbury’s Extreme Heat Challenges and Solutions

REPORT BY

THE 2022 SUMMER IMMERSION PROGRAM

IN

COMMUNITY RESILIENCE PLANNING

July 5th to July 28th, 2022

Department of Urban Planning and Community Development

School for the Environment

University of Massachusetts, Boston



University of Massachusetts Boston, Department of Urban Planning and Community Development.

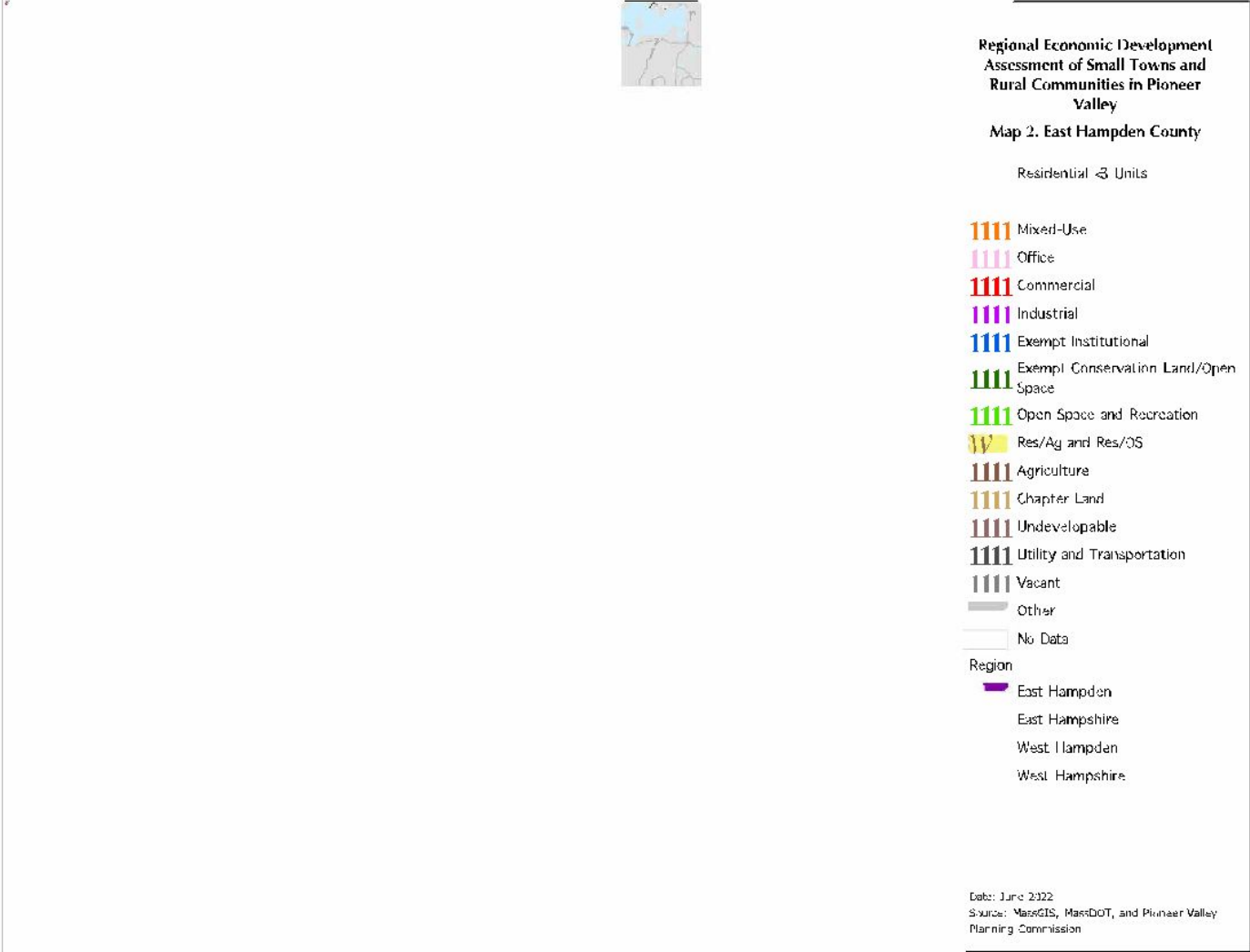


2022 APA-MA CHAPTER PLANNING AWARDS

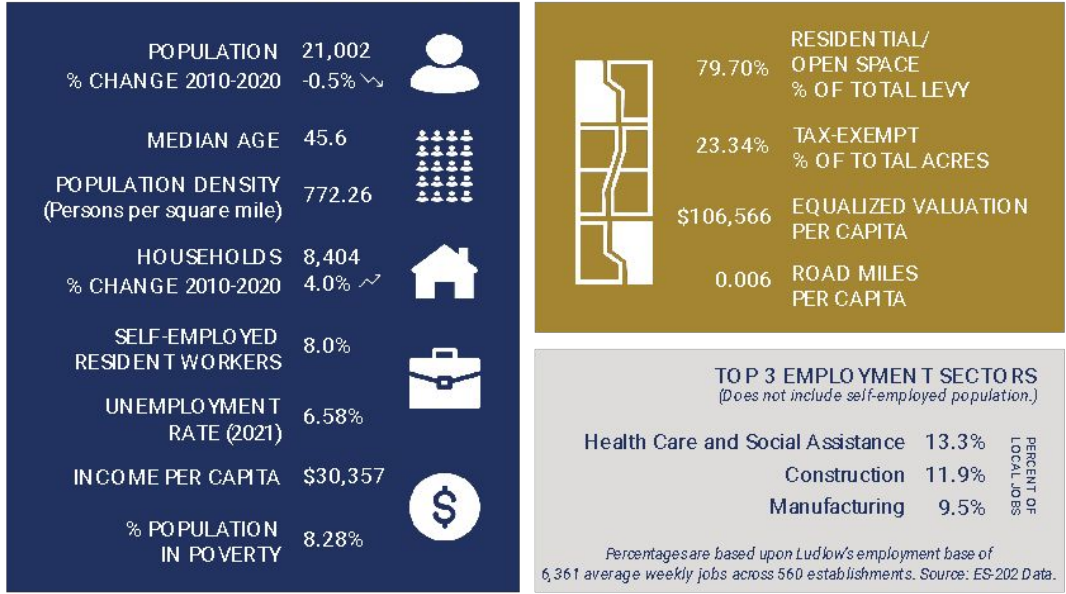
PLANNING PROJECT AWARD



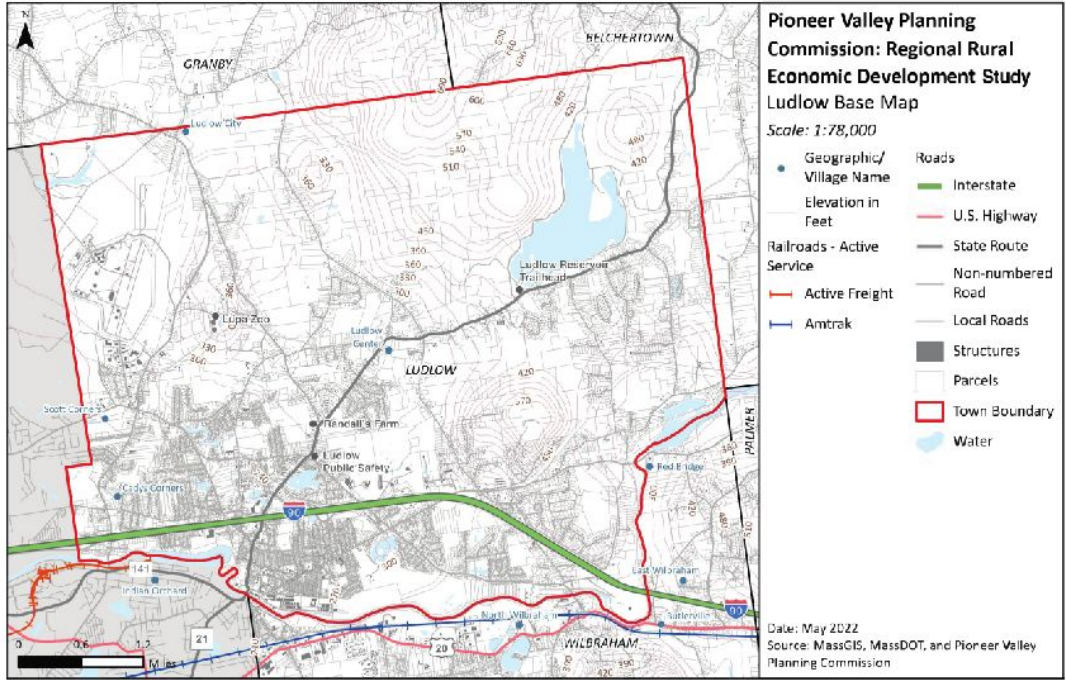




LUDLOW: KEY FACTS



Sources: U.S. Census Bureau, 2010 and 2020 Census; American Community Survey 5-Year Estimates, 2016-2020; Executive Office of Labor and Workforce Development; Labor Market Information, Employment and Wage (ES-202) and Labor Force and Unemployment Data, 2021; MA Department of Revenue, Tax Levies by Town, FY 2022; MassGIS, Property Tax Parcel Data, 2022.



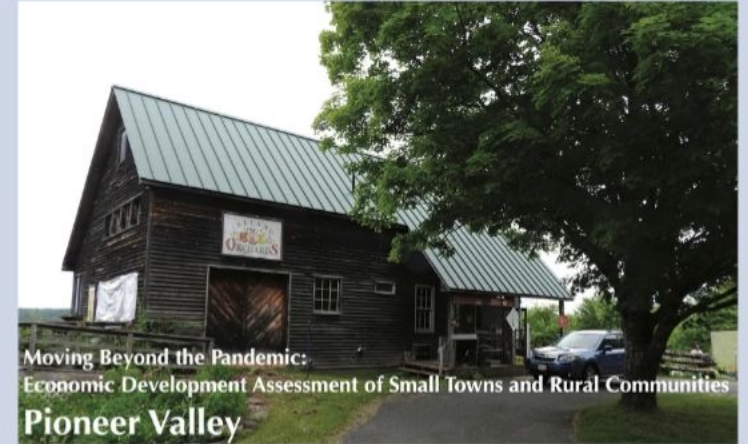




PLANNING PROJECT AWARD

MOVING BEYOND THE PANDEMIC: ECONOMIC DEVELOPMENT ASSESSMENT OF PIONEER VALLEY'S SMALL TOWNS AND RURAL COMMUNITIES (2022)

PIONEER VALLEY PLANNING COMMISSION,
in consultation with BARRETT PLANNING GROUP



In February 2022, the Pioneer Valley Planning Commission (PVPC) engaged Barrett Planning Group to review and assess economic conditions in thirty-five small towns and rural communities in Hampden County and Hampshire County. The purpose of the project was to explore the impact of the COVID-19 pandemic on the Pioneer Valley's rural economy and the region's readiness and capacity for economic development moving forward from post-COVID recovery to the future.

Toward these ends, the consultants mined, analyzed, and mapped data from a variety of sources, interviewed many local officials and business leaders, and visited and photographed conditions throughout the study area. This report presents the results of the study and identifies opportunities to support and enhance the varied economic development interests of the participating communities.

The environment for employment in these communities is challenging for several reasons. The population is small, household formation rates are

low, and much of the land is difficult to develop. These conditions, coupled with lack of infrastructure and restrictive zoning, have much to do with the small size and make-up of the economic base. Still, there are lots of thriving businesses and entrepreneurs in this part of the Commonwealth, and the insistence of residents to protect

what they value – the large expanses of open and forested land, small town centers, and low-density residential development – is remarkably similar to the sentiments of residents around Greater Boston and other cities in New England.



Belchertown	Granby	Middlefield	Southwick
Blandford	Granville	Monson	Tolland
Brimfield	Hadley	Montgomery	Wales
Chester	Hampden	Palmer	Ware
Chesterfield	Hatfield	Pelham	Westhampton
Cummington	Holland	Plainfield	Wilbraham
East Longmeadow	Huntington	Russell	Williamsburg
Easthampton	Longmeadow	South Hadley	Worthington
Goshen	Ludlow	Southampton	



2022 APA-MA CHAPTER PLANNING AWARDS

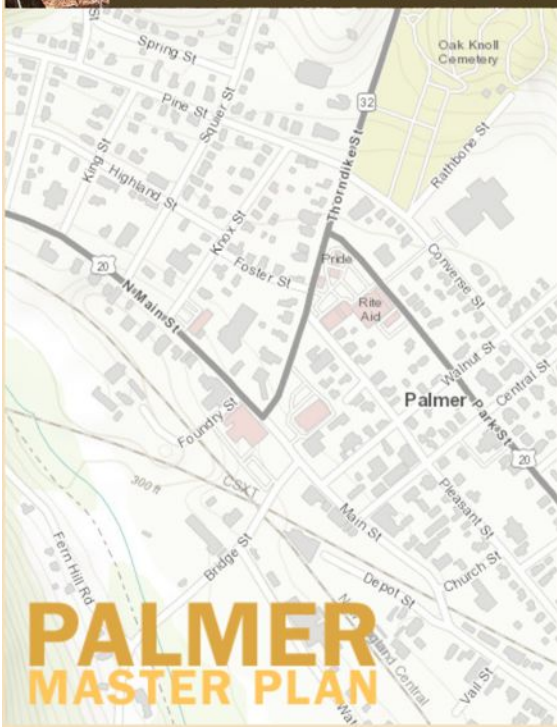
COMPREHENSIVE PLANNING AWARD





THE PALMER MASTER PLAN STEERING COMMITTEE INVITES YOU TO...

PARTICIPATE IN THE 2ND PUBLIC MEETING.



HELP THE TOWN EXPLORE ITS ECONOMY AND DEFINE ITS FUTURE ECONOMIC DEVELOPMENT

August 25 from 6:30 to 8:30 PM

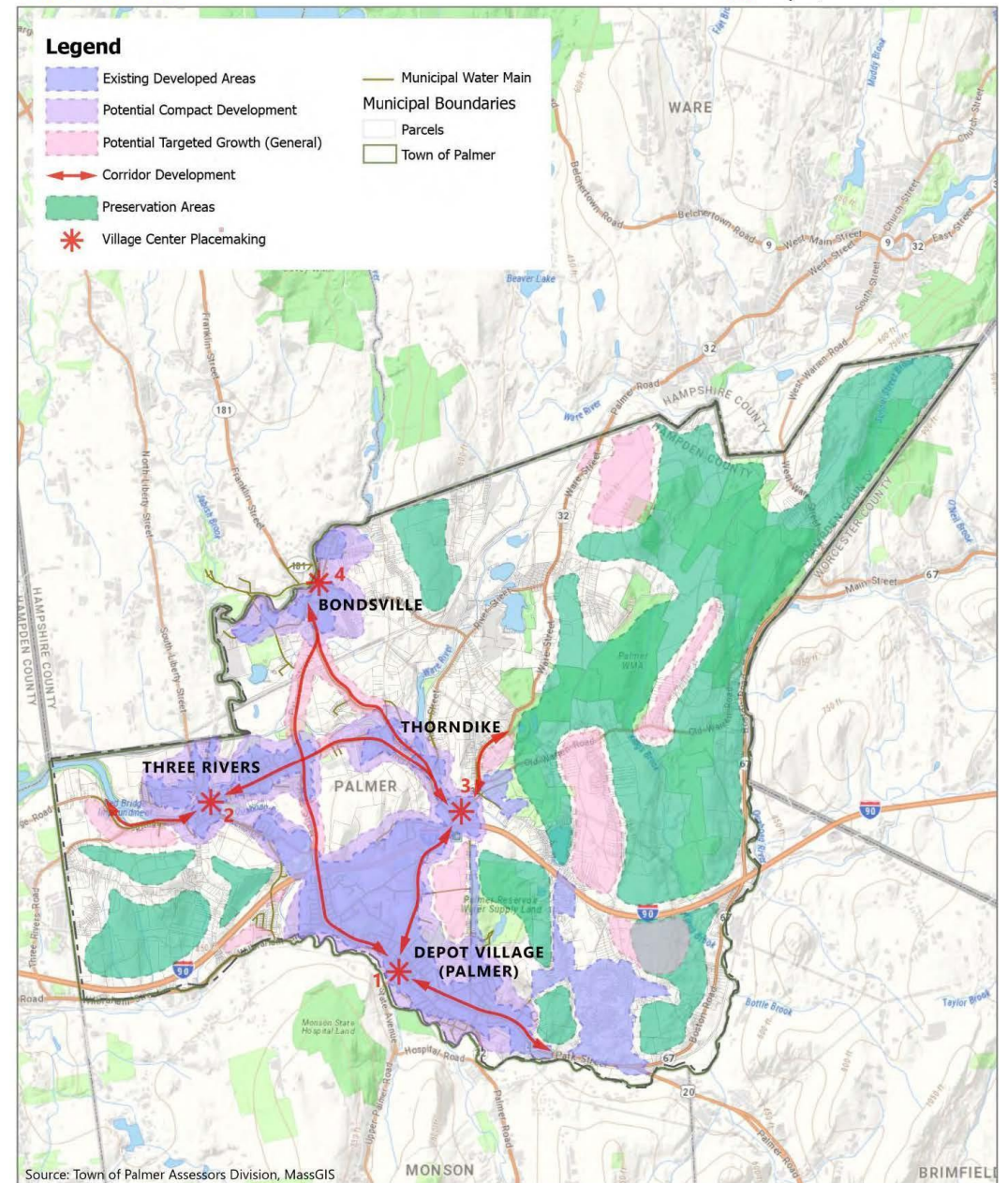
View it live on Channel 15, through the Town's Facebook account, or join through ZOOM:

<https://vhb.zoom.us/j/92053591994?pwd=MDNEaHpRUeWzTXNVbYtIVzBzV0VlZz09>
Passcode: 040390

Don't forget to take the Community Survey at:
<http://palmermasterplan.com!>

**PALMER
MASTER PLAN**

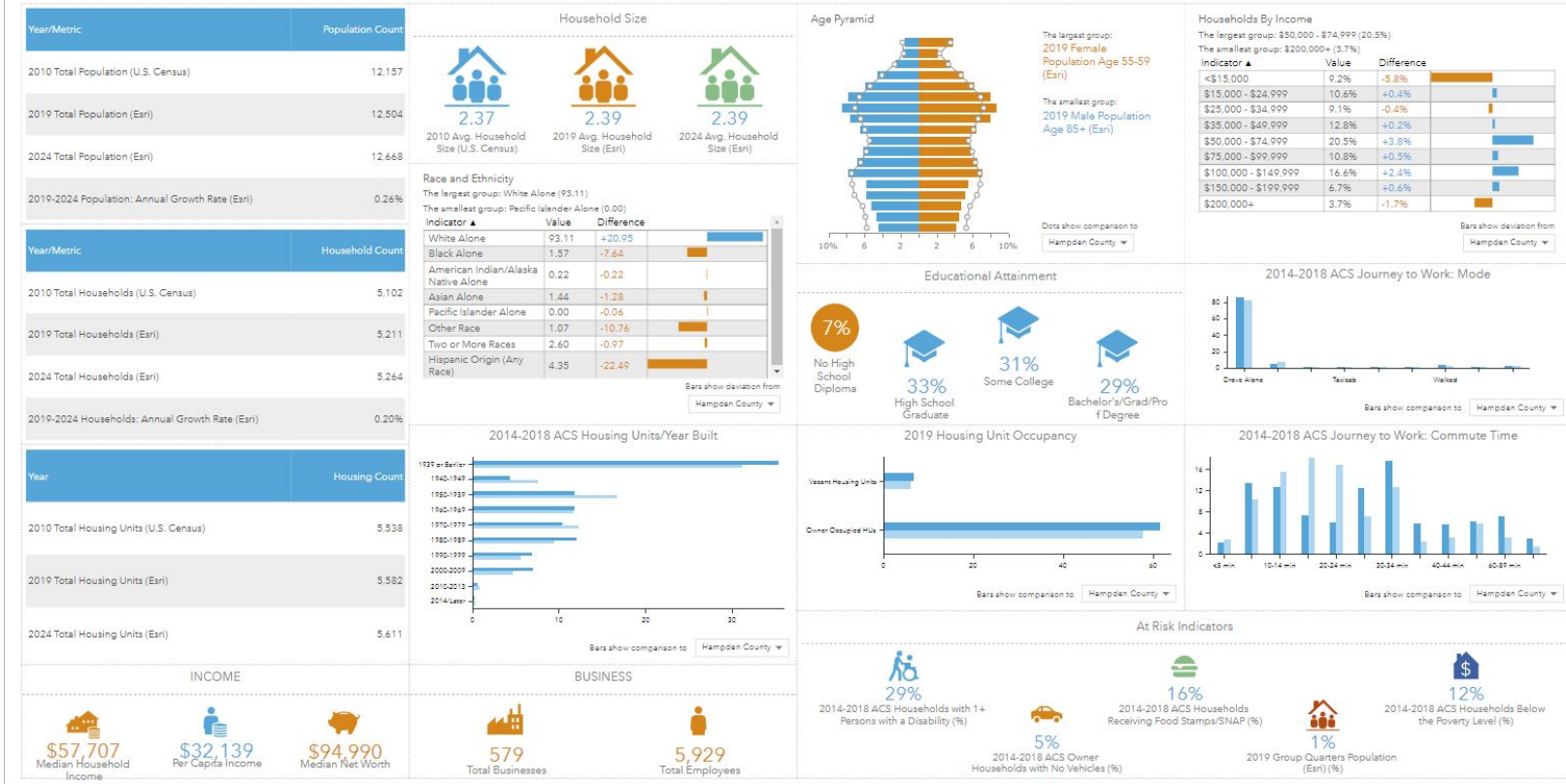
vhb July 19, 2021 | **FIGURE 2-11**



Source: Town of Palmer Assessors Division, MassGIS

Future Land Use Vision

| Palmer, Massachusetts





COMPREHENSIVE PLANNING AWARD

PALMER MASTER PLAN TOWN OF PALMER

Dave Golden, Chair - Palmer Steering Committee; Mike Marciniec, Vice Chair - Palmer Steering Committee;
Linda Leduc, Town Planner/Economic Development Director;

in consultation with Donny Goris-Kolb, Project Manager, Senior Sustainability Planner - VHB
Becky Basch, Senior Planner - Pioneer Valley Planning Commission
Jon Tremontozzi, Principal - Landwise

APA-MA 2022 Annual Awards—Comprehensive Planning Category



PALMER MASTER PLAN

Submitted by VHB

PALMER MASTER PLAN TEAM

Town of Palmer:

Linda Leduc,
Town Planner/Economic Development Director

Dave Golden,
Palmer Steering Committee Chairperson

Mike Marciniec,
Palmer Steering Committee Vice-Chairperson

Pioneer Valley Planning Commission:

Becky Basch

VHB:

Donny Goris-Kolb,
Project Manager, Senior Sustainability Planner

Landwise:

Jon Tremontozzi, Principal



2022 APA-MA CHAPTER PLANNING AWARDS

COMMUNITY OF THE YEAR





COMMUNITY OF THE YEAR

CITY OF SALEM



RETIRING/RETIRED PLANNERS

WAYNE FEIDEN, FAICP
CITY OF NORTHAMPTON

DAN FORTIER, AICP
TOWN OF DENNIS

BILL KENNEY
CITY OF FALL RIVER

LAURA WEINER
CITY OF WATERTOWN

RALPH WILLMER, FAICP
METROPOLITAN AREA
PLANNING COUNCIL



IN MEMORIAM

JIM WATSON
OLD COLONY PLANNING COUNCIL

AL LIMA
MARLBOROUGH AND SEVERAL OTHER
MUNICIPALITIES
FORMER PLANNER AND ACTIVIST IN FALL RIVER



2022
Distinguished
Civic Leadership
Excellence Award





Distinguished Civic Leadership Excellence Award

**Emmy
Hahn**



- Tireless Advocate for MA Downtowns
- Manages the MA Downtown Initiative
- Local Rapid Recovery Program served 125 cities and towns
- Established the data foundation for future downtown funding
- Fostered creation of Business Improvement Districts in MA

2022 APA-MA CHAPTER PLANNING AWARDS



American Planning Association
Massachusetts Chapter

Creating Great Communities for All



American Planning Association
Massachusetts Chapter

Creating Great Communities for All

LEARN MORE: www.apa-ma.org